



SPRING & FALL CLEAN-UPS



There are two bulky waste clean-ups annually, in the Spring and the Fall. Check our website for your location's clean-up dates and rules.

Bagged items **must** be in clear bags. **The following items will not be collected:**

- Cooling Devices like freezers, air conditioners, dehumidifiers, fridges
- Tires, Large Auto Parts, Batteries
- Cardboard, and Recyclables
- Leaves and Yard Waste
- Household Hazardous Waste
- Household Batteries
- Electronics like TVs, computers, printers, microwaves, stereos, monitors, phones (free to drop off at our sites or EPRA locations).

LOCAL HAULERS & DUMPSTERS

Clearing a house or doing renovations? A list of dumpster rentals and haulers is available at www.vwrm.com/services/haulers-list-and-cd-sites/



TIPPING FEES

www.vwrm.com/services/locations-tipping-fees/

SORTING GUIDE

Want reminders for collection day? Storm day updates? Questions about what goes where? **Download the Recycle Coach app** from either the Google Store or Apple Store.



SCAN ME

VALLEY WASTE CALENDARS

Valley Waste's annual calendar with tips, and guides can be found at your local town and village offices, Enviro-Depots, libraries, and the Valley Waste office.



STEWARDSHIP PROGRAMS

CFL and FLUORESCENT BULBS

Bring your CFL Bulbs or fluorescent bulbs to the Management Centre for proper disposal.



ENVIRO-DEPOT™

Some local Enviro-Depot™ accept refundables, electronics and household paint. <https://divertns.ca/find-depot>



ELECTRONICS

Electronics are accepted for free at some ENVIRO-DEPOT™ and Management sites. Cooling devices are not included. visit <https://recyclemyelectronics.ca/ns> for your nearest location, and to see what's accepted under the program.



HOUSEHOLD HAZARDOUS WASTE (HHW)

A product is considered HHW if it bears a dangerous goods symbol, or if words such as danger, poisonous, caution, or warning appear on the label. They cannot be disposed of in regular garbage, and can be brought into our sites for free.

BATTERIES

Some lithium batteries can be flammable. Ensure they are bagged or taped. They can be returned for FREE to our sites! Visit the link for other locations.

<http://recycleyourbatteries.ca>



PAINT

The paint recycling program accepts residential paint products including alkyd paint, latex paint and paint aerosols at a variety of recycling locations including our Management Centres, retailers and some local ENVIRO-DEPOT™ may accept paint free of charge. For details of accepted products, visit



<http://www.productcare.org/products/paint/nova-scotia/>

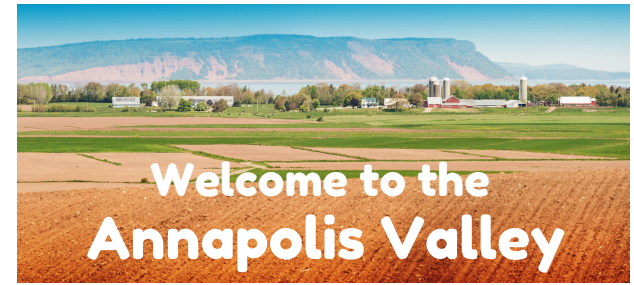
TIRES

Up to four clean rimless tires per day can be returned to any tire dealership, free of charge.

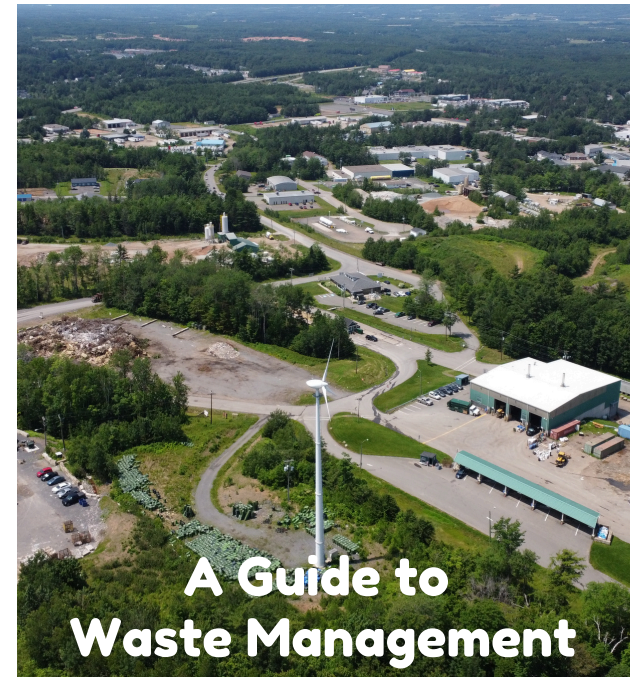


#partnersinwastereduction

For more information, visit www.vwrm.com or call 902-679-1325 or 1-877-927-8300



Welcome to the Annapolis Valley



A Guide to Waste Management

Kentville Waste Management Site
100 Donald Hiltz Connector, Kentville
(Exit 14 on Hwy 101)
Mon-Fri: 8am-4pm, Sat: 8am-noon

Lawrencetown Waste Management Site
343 Elliott Road, Lawrencetown
(Exit 19 on Hwy 101)
Tues-Fri: 8am-4pm, Sat: 8am-noon

info@vwrm.com
902-679-1325
www.vwrm.com





CURBSIDE COLLECTION

Curbside Collection takes place on a **bi-weekly schedule**. Visit our website for more information on your area.

COLLECTION STARTS AT 7AM.

CURBSIDE SET-OUT

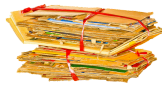
You are allowed a **maximum of 8 bags** of which **4 can be garbage** (only one solid bag can be included in your 4-bag garbage limit), and 4 bags can be recycling. **Garbage should be in clear bags and recycling in blue bags.**

Bulky items are only collected during Spring and Fall clean-ups.

Garbage (clear bags)	+ Recycling (blue bags)	= Total bags allowed
4	4	8
1	7	8
2	6	8
3	5	8

Cardboard

Maximum 2 flat bundles no larger than 3ftx2ftx1ft.



Brush

Maximum 2 tied bundles no larger than 4ftx2ft.



Green carts are the property of Valley Waste and are assigned to the property. **Maximum weight limit must not to exceed 100kg.**

Leaves

Bagged leaves are **NOT** collected curbside. They can be mulched, added to a backyard composter, green cart or brought to our sites for **FREE** and debagged onsite.



GREEN CARTS

Green carts are issued to a civic address and belong to Valley Waste. They must remain at that civic address. If the cart is broken, you can request a replacement cart by completing the online form or calling the Hotline. Carts will not be replaced if they are dirty or missing grates.

KEEP YOUR CART CLEAN

This helps to avoid pests and rodents

- Hose out your cart on a regular basis
- Wrap food in cereal/cracker boxes or newspaper
- Refrigerate or freeze smelly items until collection
- Put cat litter in paper bags or approved compostable bags



DON'T OVERFILL YOUR CART

The maximum capacity is 220lb (100kg). Carts exceeding this weight cannot be lifted by the hydraulics on the collection truck. Brush must also be cut to fit in a cart or bundled for collection. Empty your cart on a regular basis to avoid overloading it.



DON'T PUT HOT ASHES YOUR CART

Don't put ashes in the green cart as they can cause a fire. Use them in your backyard compost pile or put them in a metal pail outside until they cool down before putting them in a clear bag for collection.



DON'T LOCK US OUT!

Bungee cords and locks must be opened or removed before collection. Drivers are not responsible for replacing them on your cart.

WINTER COLLECTION

- Put a layer of balled-up paper in the bottom of the cart or spray your cart with cooking spray to stop food from sticking to the side of the cart.
- Wrap food waste in paper products (cracker/cereal boxes) to help reduce moisture that can freeze and stop food from sticking to the sides of the cart.
- Keep carts shovelled out, do not place on top of snow banks or set on icy surfaces.
- Carts should be set out no further than 15 feet from the curb and not impede pedestrian, vehicular traffic or snow plows.



BACKYARD COMPOSTING

Backyard composters are available from Valley Waste. Please call for price and to arrange to collect from our Kentville location.



SEASONAL PROPERTIES AND PRIVATE ROADS



Valley Waste offers curbside collection to most cottage areas in the region however, during the winter collection may vary depending on road conditions and weather.

Please contact your cottage association for more information or call our Hotline.

THE LAST RESORT REUSE CENTRE



Valley Waste has a ReUse Centre which is open on Saturdays (except holidays) from 9am - noon. Follow the store on Facebook.